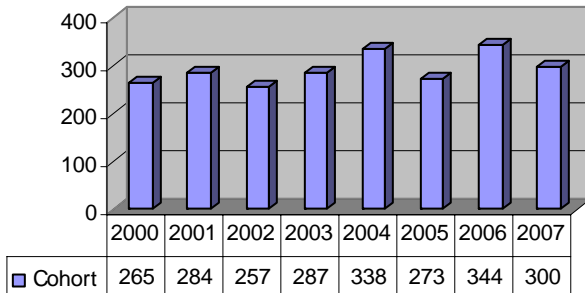


## New Freshman Profile: Fall 2007

### NEW UNDERGRADUATES FALL 2007

FALL	Freshmen	Transfers
New Students on Campus	300	152
Credit Hours	4,724	2,286
Average Hours per Student	15.75	15.04

NEW FRESHMEN 2000-2007



### NEW STUDENT DEMOGRAPHICS

GENDER	Freshmen	Transfers
Male	56%	37.5%
Female	44%	62.5%

ETHNICITY	Freshmen	Transfers
Asian	1%	<1%
Black	12%	19%
Hispanic	1%	2%
International	4%	<1%
White	78%	72%
Other, Unknown	4%	5%

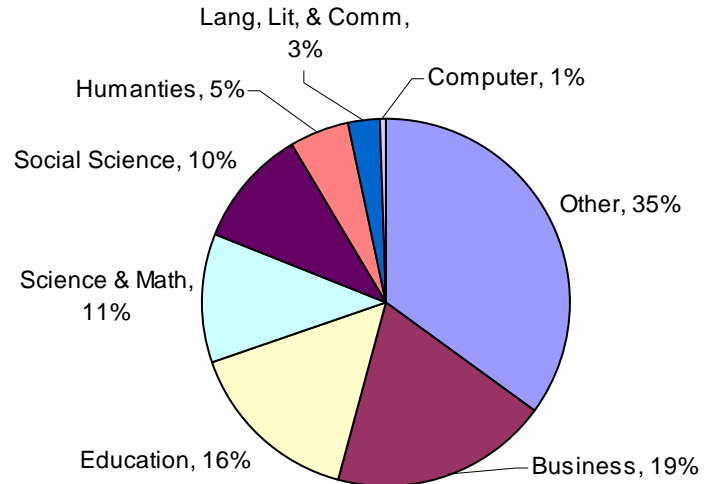
AGE	Freshmen	Transfers
Average Age	18	24

HOME ADDRESSES	Freshmen	Transfers
Metro East Area	45%	69%
St. Clair County	21%	40%
Madison County	15%	15%
Clinton County	7%	11%
Monroe County	2%	3%
Rest of Southwest IL	8%	7%
Central Illinois	14%	9%
Southern Illinois	9%	4%
Northern Illinois	10%	4%
Missouri	9%	5%
Other US	2%	3%
International	4%	0%

Other US Freshmen include: New York, Texas, Iowa, Pennsylvania, and Florida.  
International Freshmen include: India, Germany, Columbia, Canada, Peru, Barbados, United Kingdom, and Nepal.

### FIELDS OF STUDY

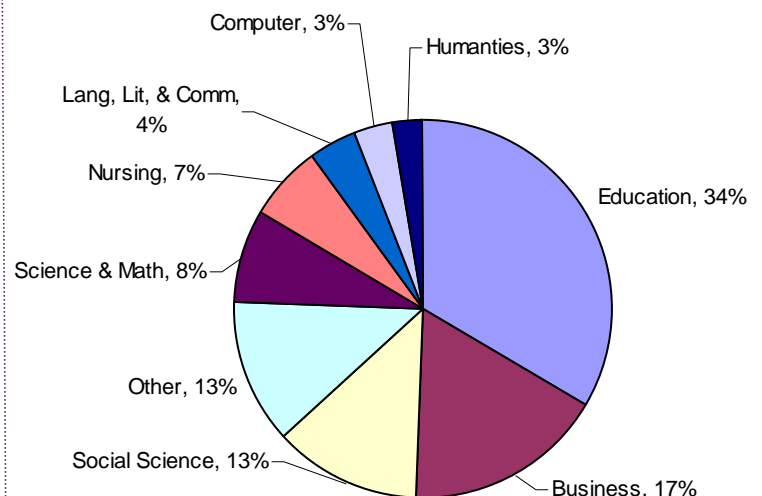
#### INCOMING FRESHMEN BY DIVISION



#### MOST POPULAR MAJORS OF INCOMING FRESHMEN

Undeclared	35%
Business Administration	9%
Biology	7%
Accounting	6%
Athletic Training	6%
Elementary Education	5%
Psychology	5%
Sociology	3%
Physical Education	3%
Marketing	2%
Occupational Therapy	2%
History	2%
Speech Communication	2%
Other	13%

#### TRANSFER STUDENTS BY DIVISION





# New Freshman Profile: Fall 2007

## ADMISSION STATISTICS

FALL 2007	Freshmen	Transfers
Applied	1095	416
Admitted	776	258
Enrolled	300	152
Admit Rate (% applicants admitted)	71%	62%
Yield (% admits enrolled)	39%	59%

Freshman include international freshman. Transfers include international transfers.

## RANKINGS, GPA & TEST SCORES

FALL 2007	Freshmen
Top 10% High School Ranking	20%
Top 25% High School Ranking	51%
High School GPA	3.5
Average ACT Score	24

## EXPENSES AND FINANCE

FALL 2007 BUDGET	\$30,830
Flat Rate Tuition	\$19,500
Room (residence hall)	\$4,060
Board (15 meal plan)	\$3,600
Fees	\$650
Books and other supplies	\$1,200
Transportation	\$820
Personal Expenses	\$1,000

## RETENTION RATE

### FRESHMAN RETURNING FROM FALL 2006

Last Year Freshman Cohort 2006	344
Number Returning Fall 2006—Fall 2007	245
Fall to Fall Retention Rate	71%

## GRADUATION RATE

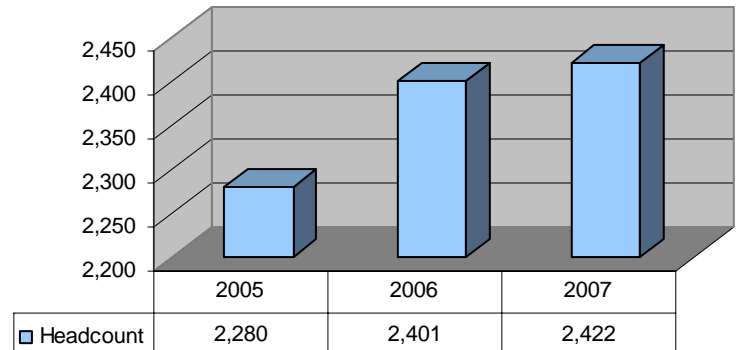
### PERCENTAGE OF STUDENTS WHO GRADUATE

Within Four Years	51%
Within Five Years	59%
Within Six Years	60%

Based on 2001 Freshman Cohort group

## ALL UNDERGRADUATES

### ALL UNDERGRADUATES 10th DAY HEADCOUNT



FALL 2007 10th day headcount up 1%

### ALL UNDERGRADUATES 10th DAY CREDIT HOURS

